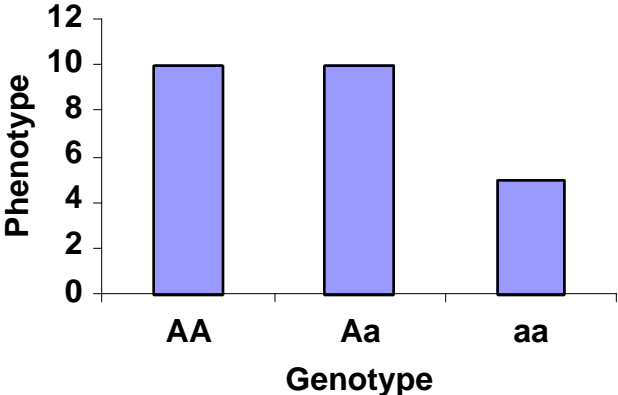
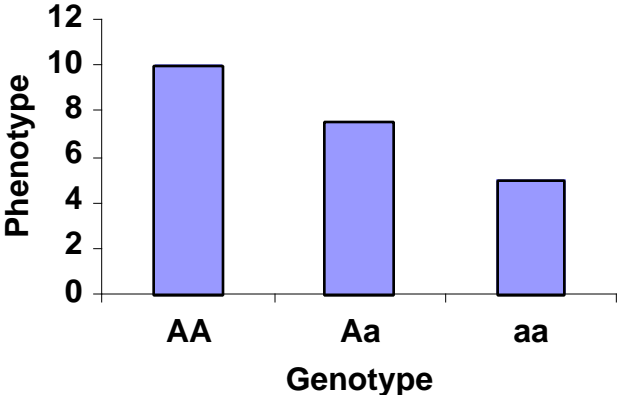


Genotype to Phenotype Relationships

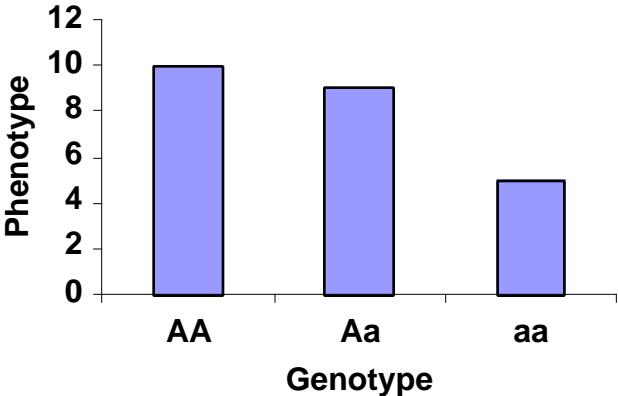
Dominance



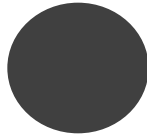
Additive



Additive



Dominance is a Matter of Perspective

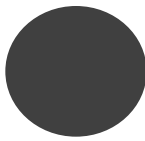


WW

X

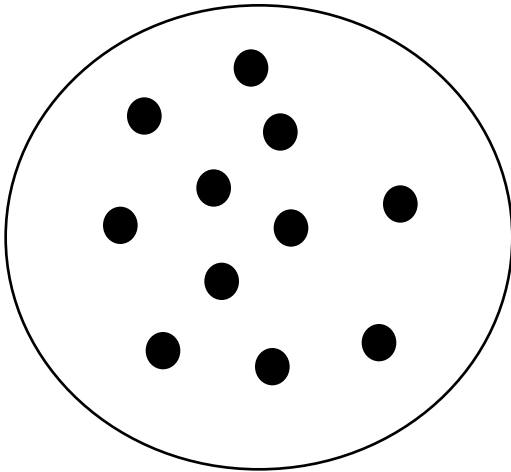


ww



Ww

Dominance:
Character is identical to one of the parents.

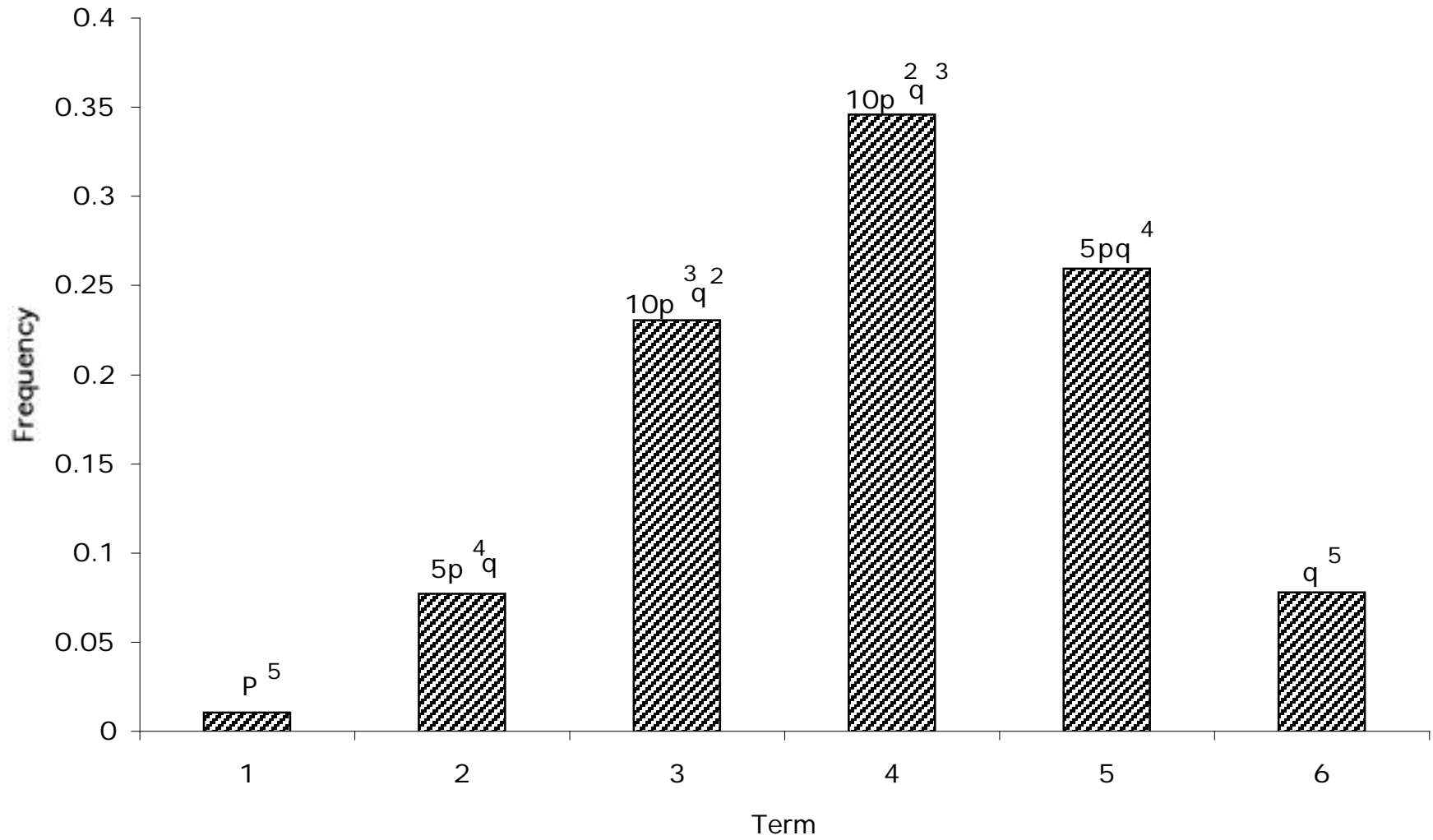


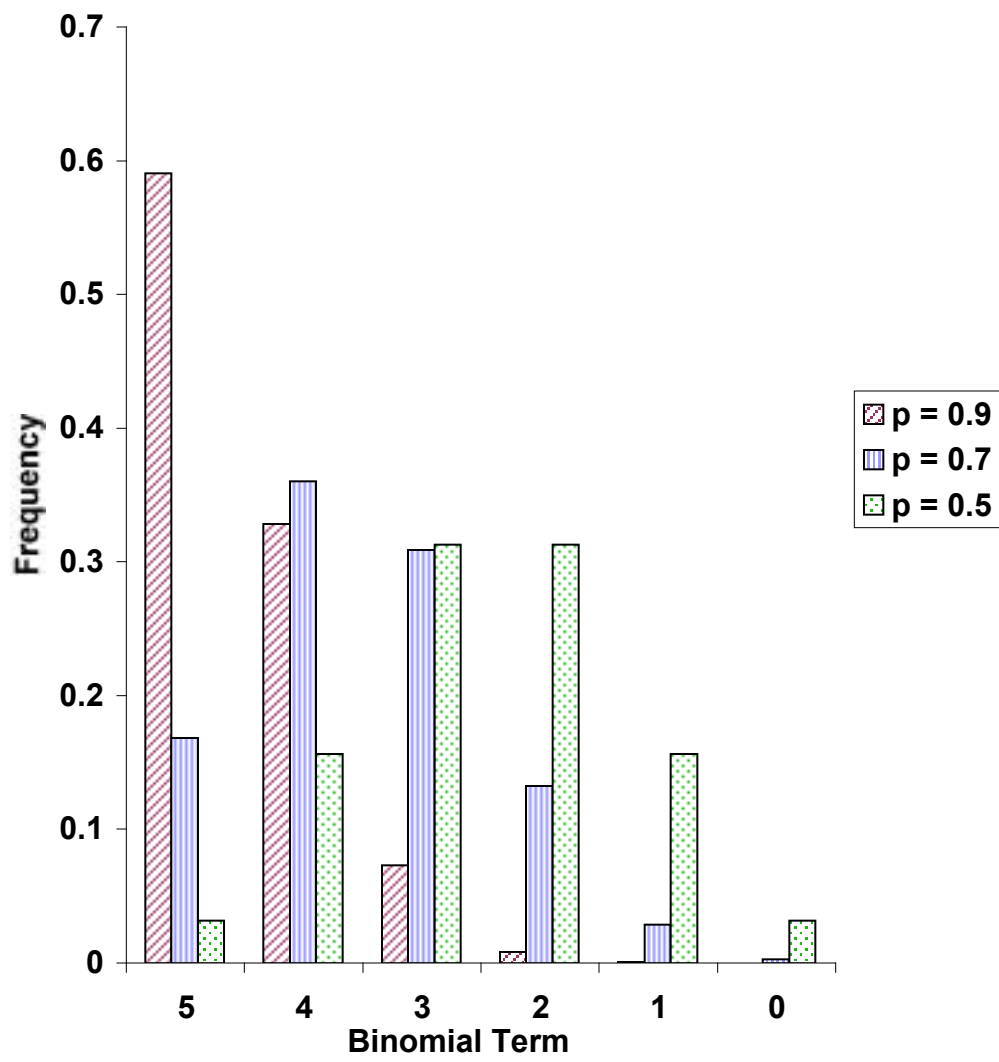
Partial Dominance:
Character is intermediate to parents.

CTACTTA**A**GGCCCCATA
CTACTTA**G**GGCCCCATA

Codominant:
Character is identical to both parents

Binomial Distribution





Poisson Distribution

